

SNM

StickyNoMore.com

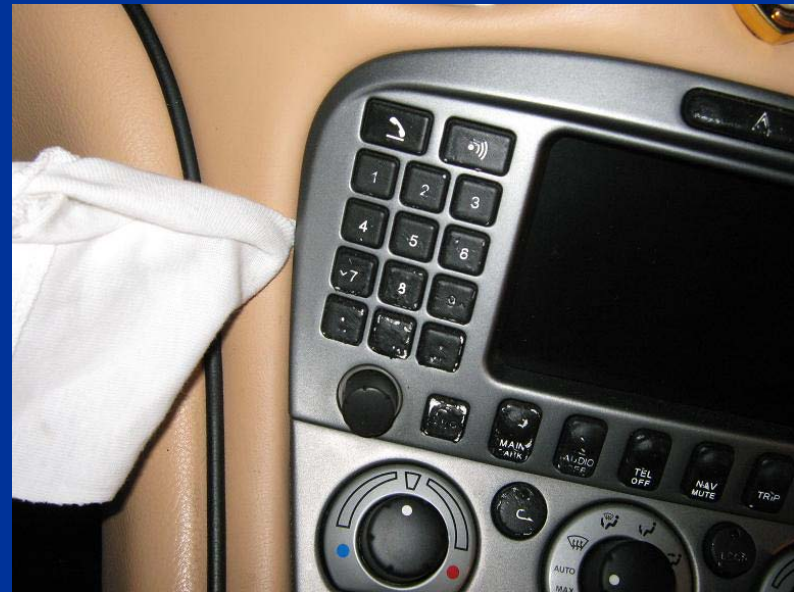
Removal Instructions

Center Console Radio and Control Removal



Remove the Radio from Dash

- Gently and Carefully, using a common screwdriver covered with cloth, pry the radio out of the dash using the slots in the sides of the radio surround.



Disconnect Wiring

- Remove the two wiring harnesses by gently prying the tabs up and pulling apart.

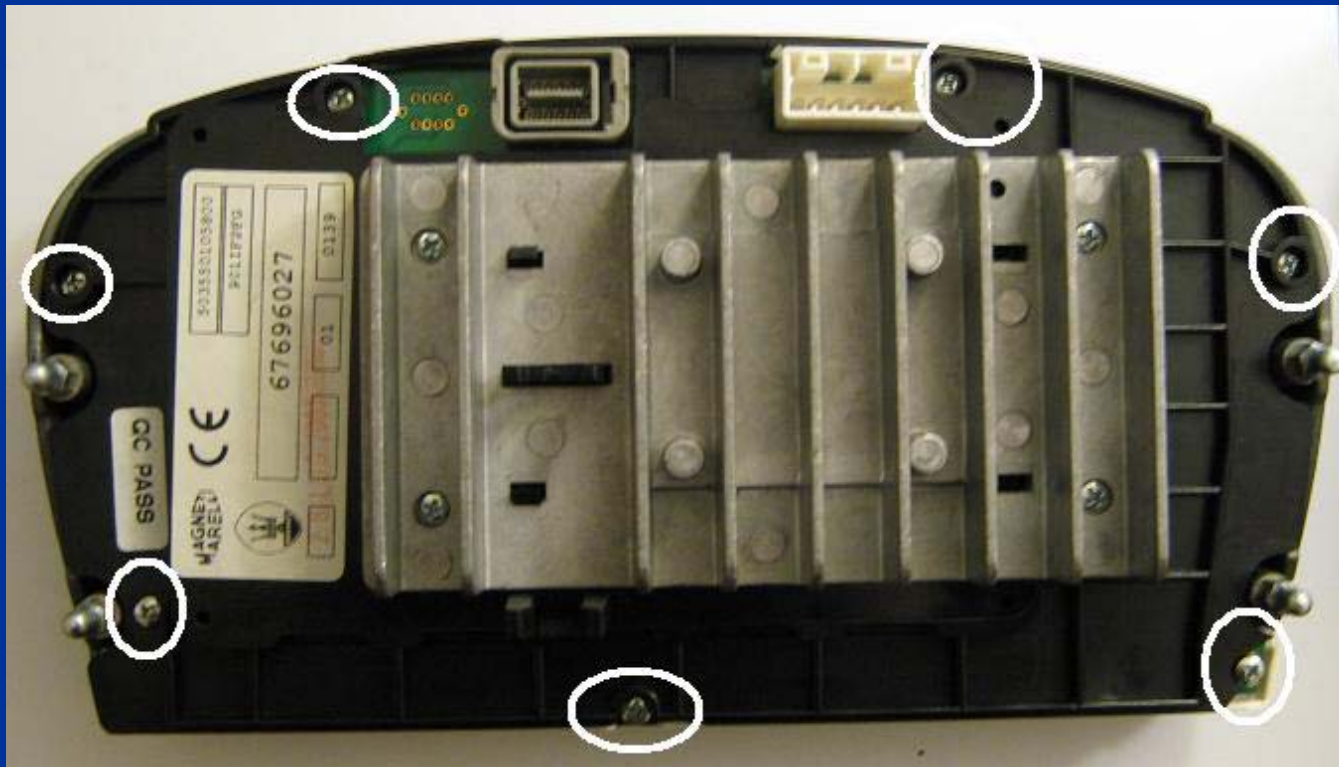


Radio Disassembly



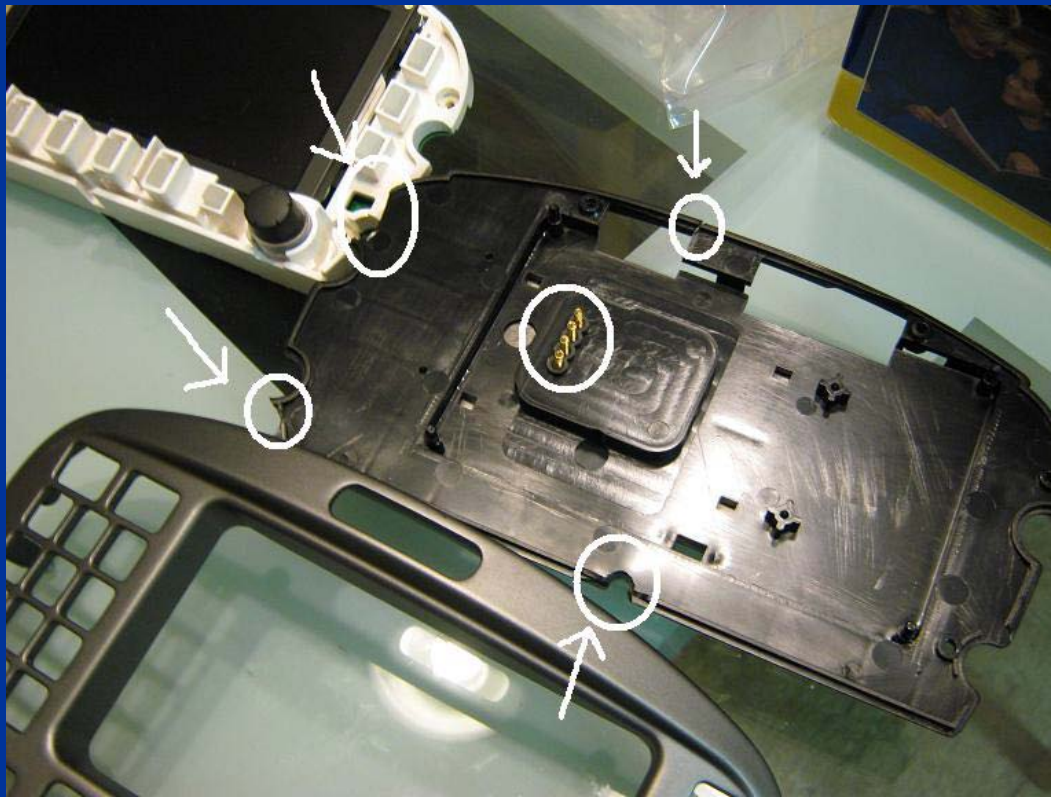
Disassemble Radio

- Carefully remove the radio backing plate via the seven phillips screws. Be careful, the plastic is brittle. Press down gently on as the piece is under tension from 4 springs underneath. If you don't, when you get down to one screw, the plastic will break around that last screw (as happened to me as you can see with the bottom right hand corner). I had about four breaks in the plastic around three screws but everything screwed back together okay and works without a problem. Just be careful!



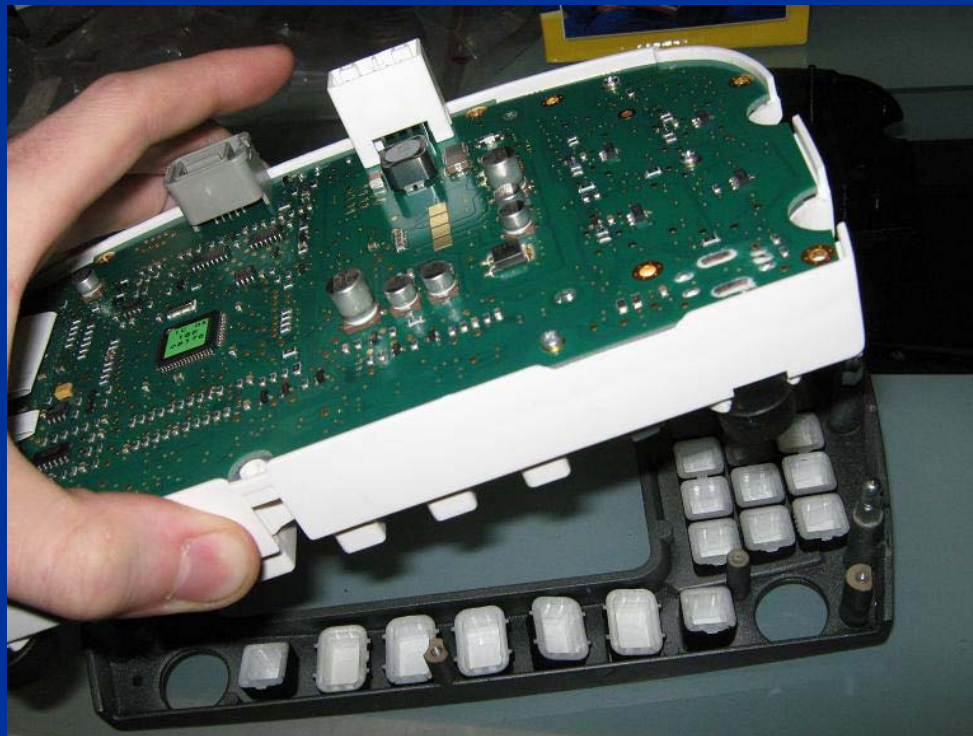
Radio Disassembly

- The four springs are just set in there. They will fall out. The arrows are where my plastic broke.



Radio Disassembly

- Once the backing plate is removed, the actual radio / screen will lift out of the face surround. Buttons will now simply lift out.



Radio Button Placement



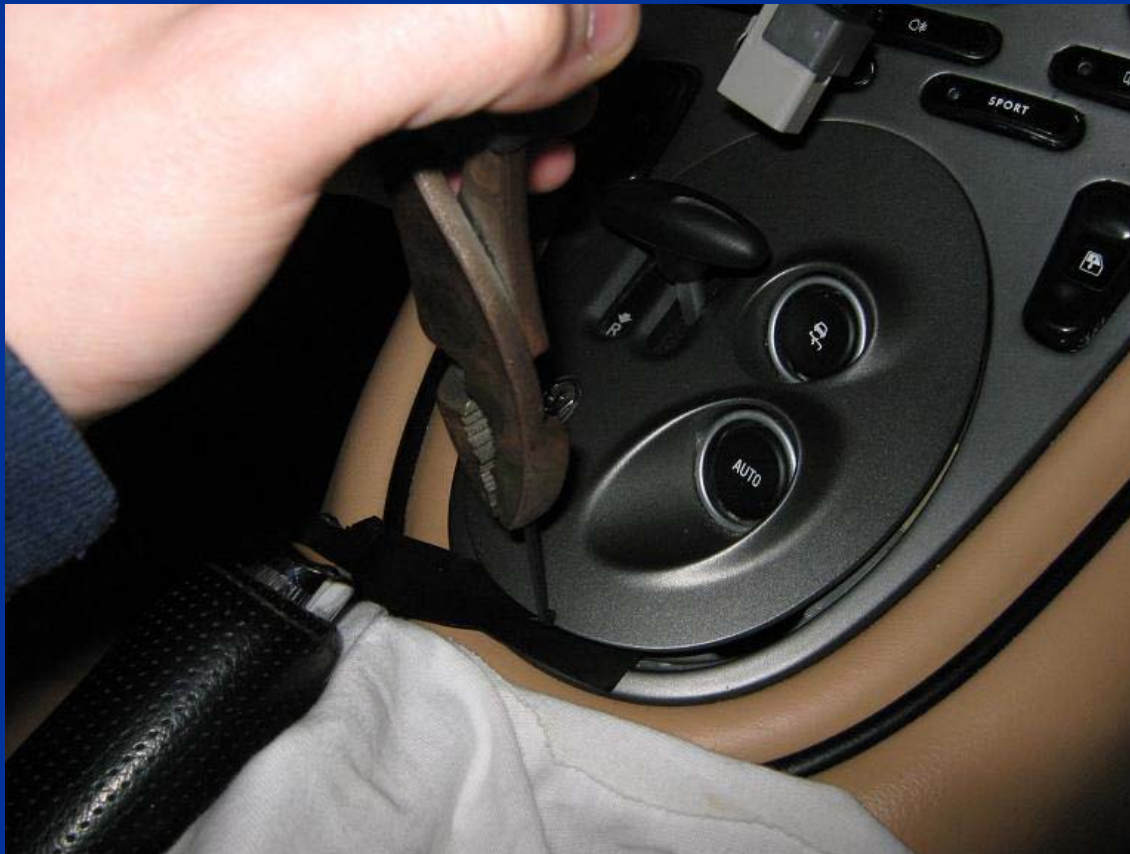
Remove Reverse Control Pod

- Slide a piece of electrical tape in the space between the pod and the surround so as to not scratch the surround when you are attempting to pull the pod loose. I used a small allen wrench to slide in the notch. You need to pull straight up on it with a good deal of even force.



Pull Pod Out

- I used pliers to grip the allen wrench and pulled straight up. It will pop loose.



Screw under the Pod

- Use an allen wrench to remove the screw under the pod.



- Four more screws need to be removed with an allen wrench behind where the radio was.



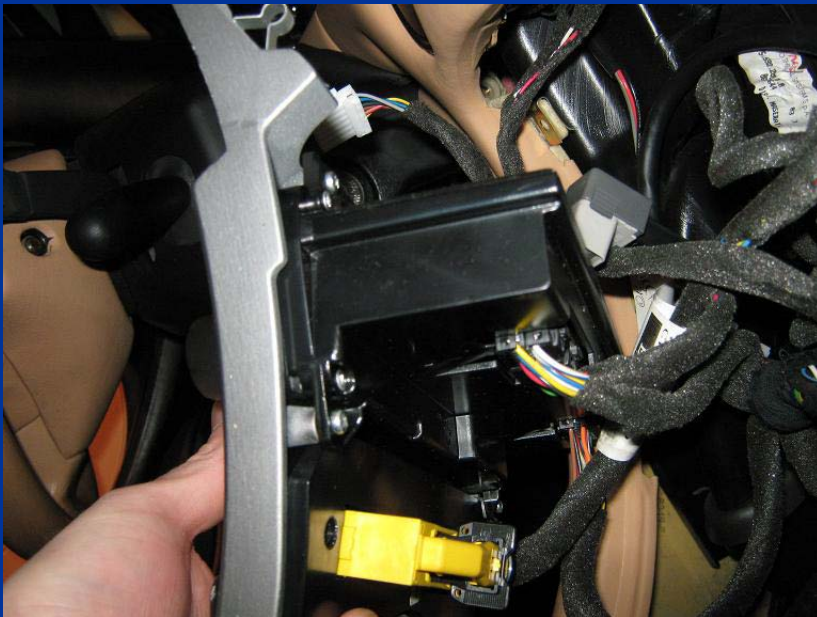
Pull Surround Out

- The surround with the remaining controls is now free and can be pulled out.



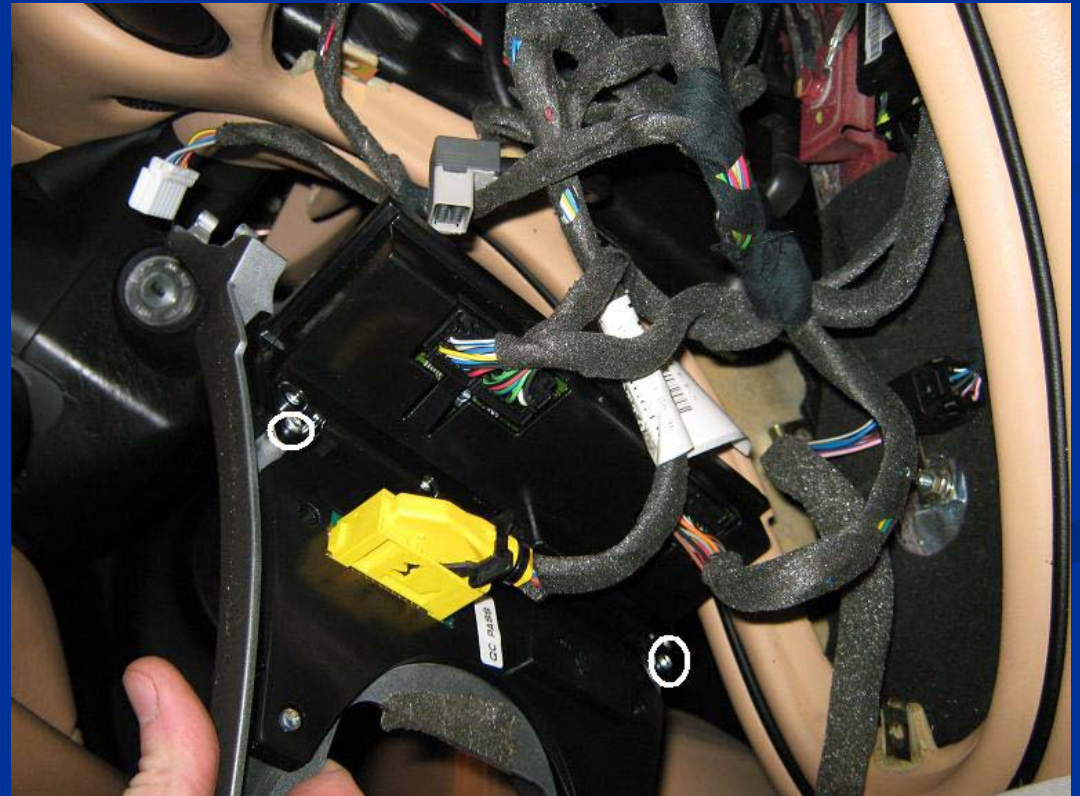
Removing remaining controls

- Once the surround is pulled away from the console, angle the pod on it's side and slide it back through the hole.



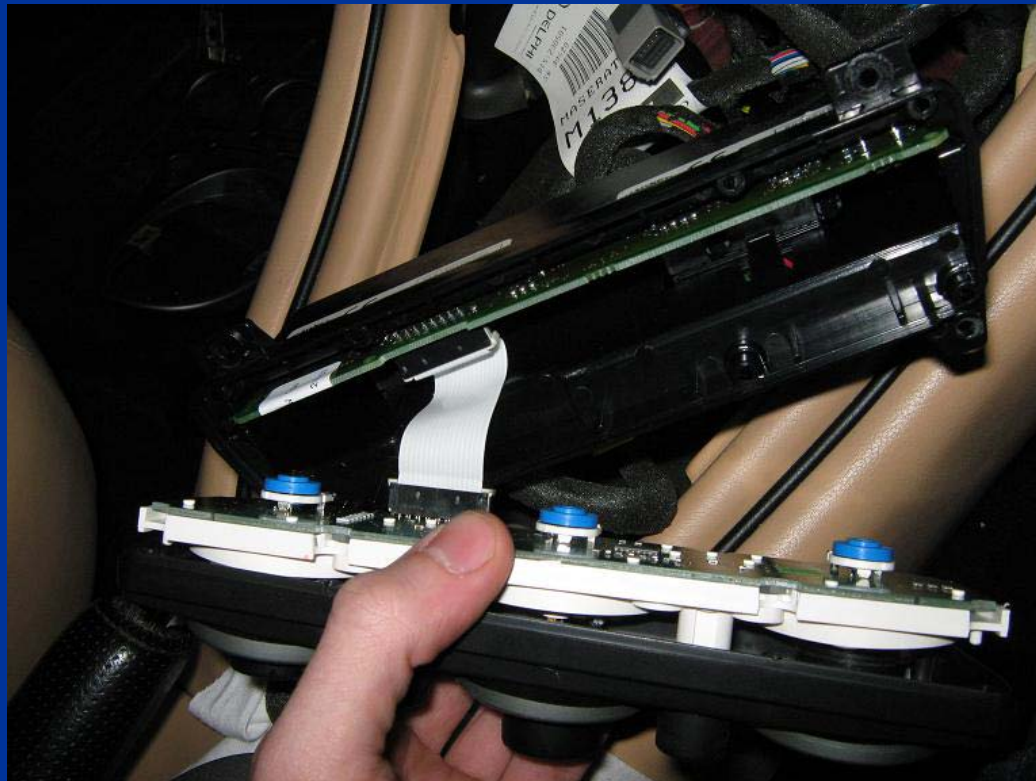
Climate Control Panel

- Remove four screws holding the climate control panel (they come out from the back) to the surround and separate the two.

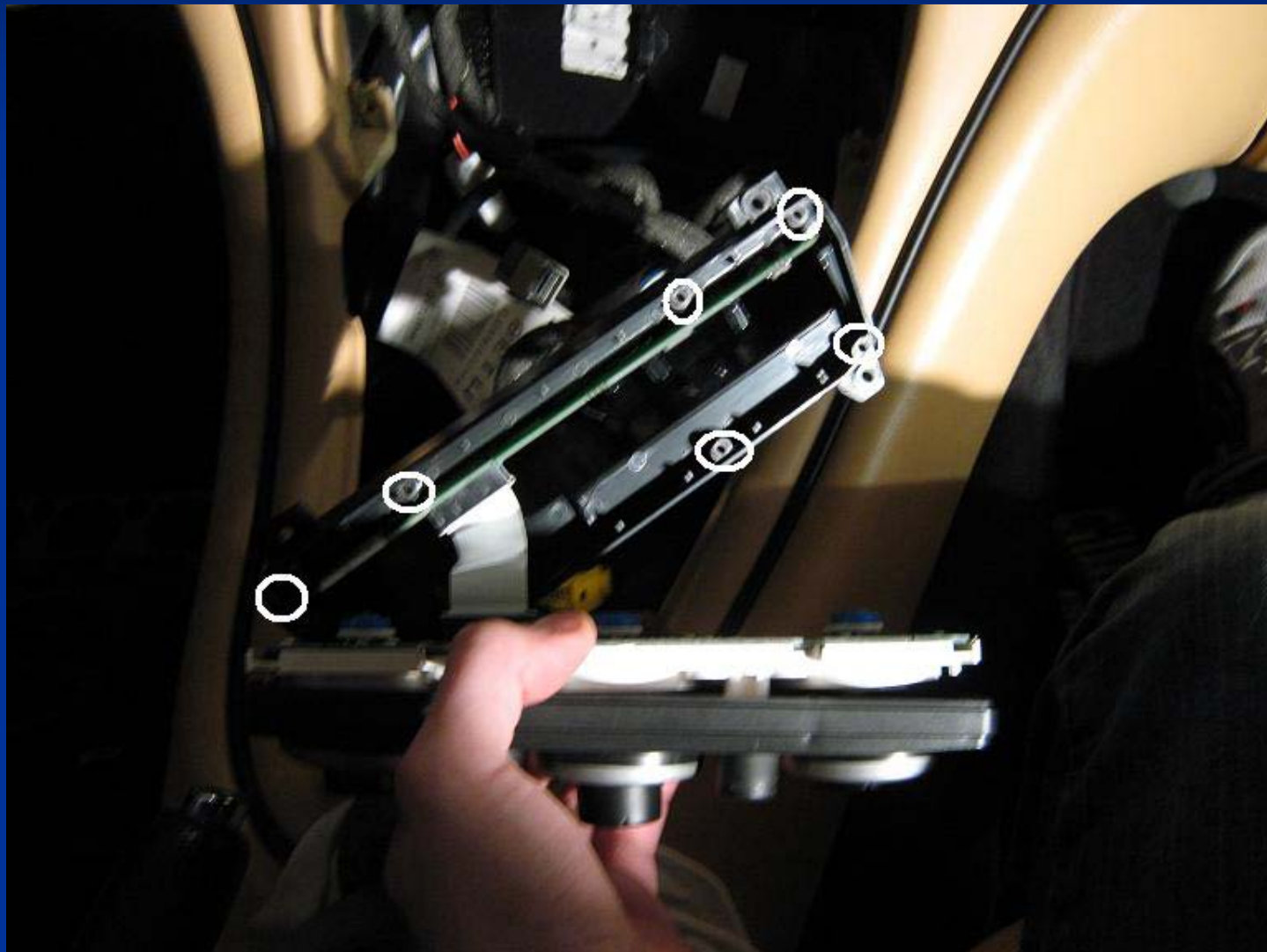


Climate Control Panel

- There are six or seven very skinny phillips head self tapping screws that hold the climate control panel together. Remove them and pull apart.



Climate Control Panel



Climate Control Panel

- The climate control panel will now separate. Have the three knobs pointing straight up before you lift them out so that you replace them properly when you are ready to reassemble.



Remove Accessory Wiring Harness

- Remove the wiring harness from the accessory control panel. Push tab in and rotate the black lever over. The Yellow connector will pop itself out when you do this.



Remove Accessory Control Panel

- Remove the backing plate to the accessory control panel via four phillips screws.



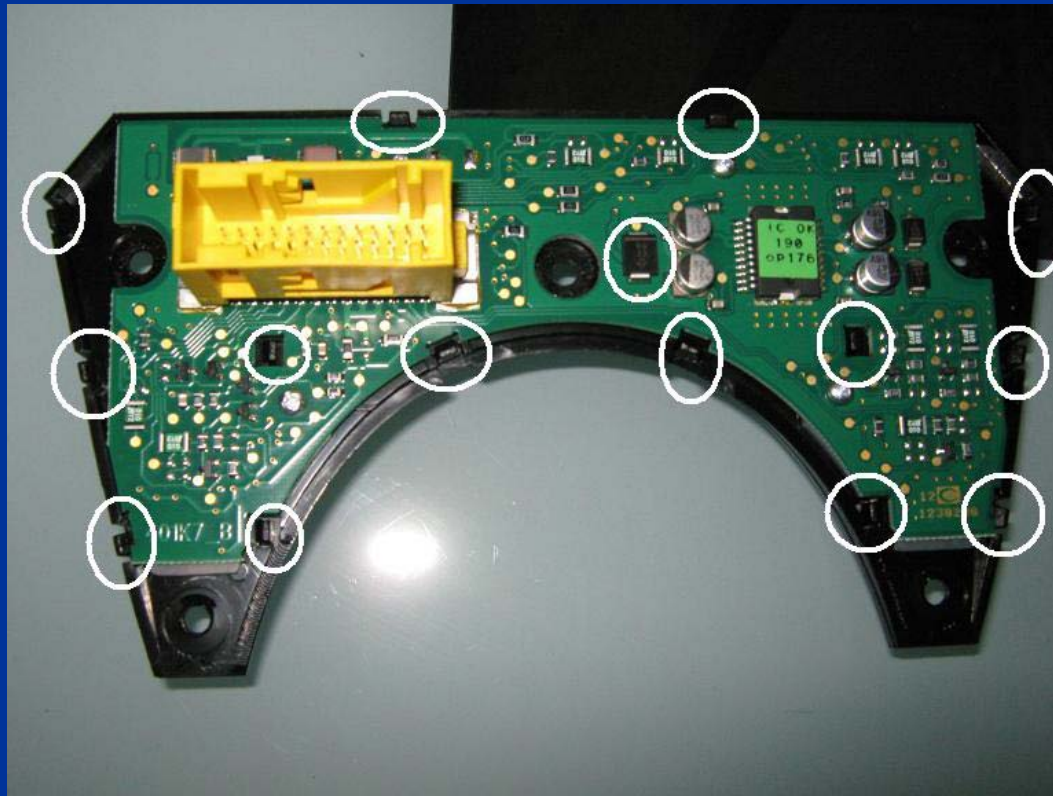
Remove Accessory Control Panel

- Remove the screw holding the control panel to the surround. There is a spacer / washer under the screw. The panel will now come free and lift out.



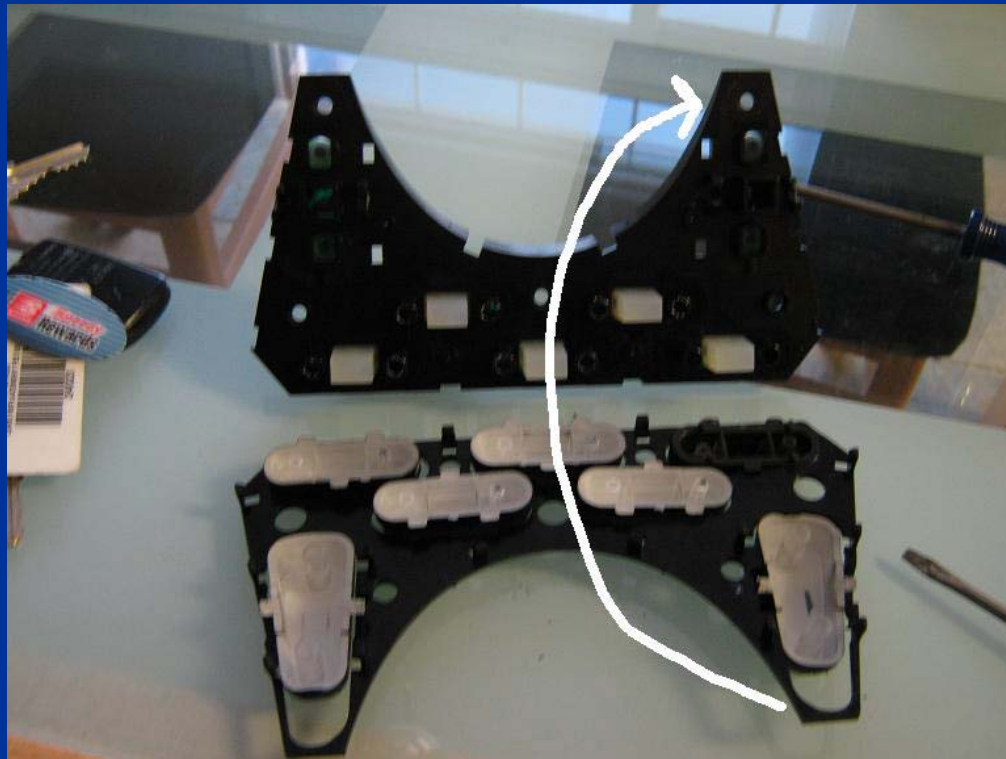
Separate the accessory panel

- Ever so carefully, work your way around and gently pry up the clips holding the accessory control panel together.



Control Panel Accessory Buttons

- Separate the control panel pieces to remove the buttons.



Reassembly

- Reassemble everything in the reverse order.
- Be careful not to overtighten any of the screws as the plastic is brittle (on mine anyways) and easily breaks.

