

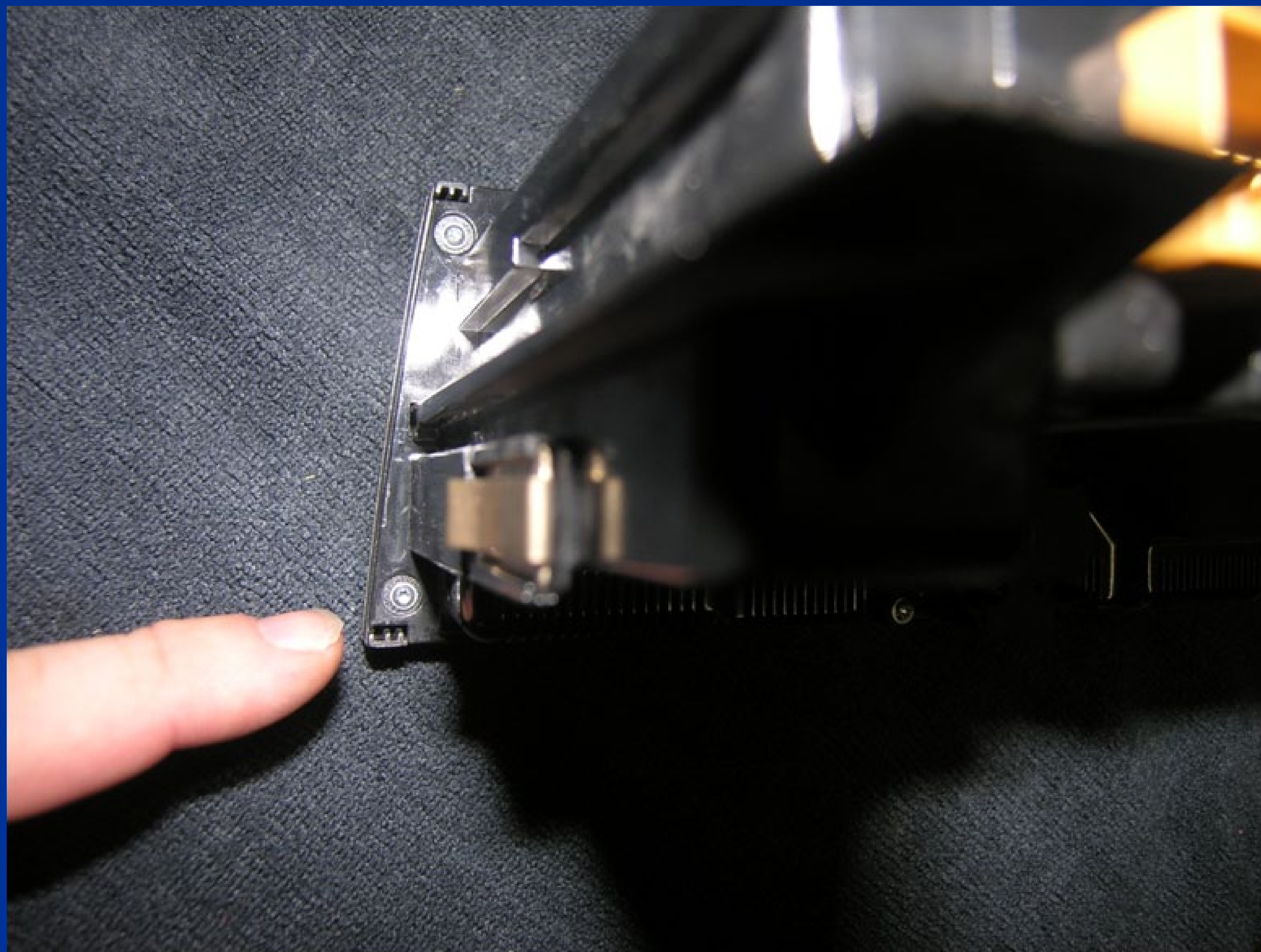
S**N****M** **StickyNoMore** **Removal Instructions**

Porsche HVAC TEMP/FAN Switch Removal

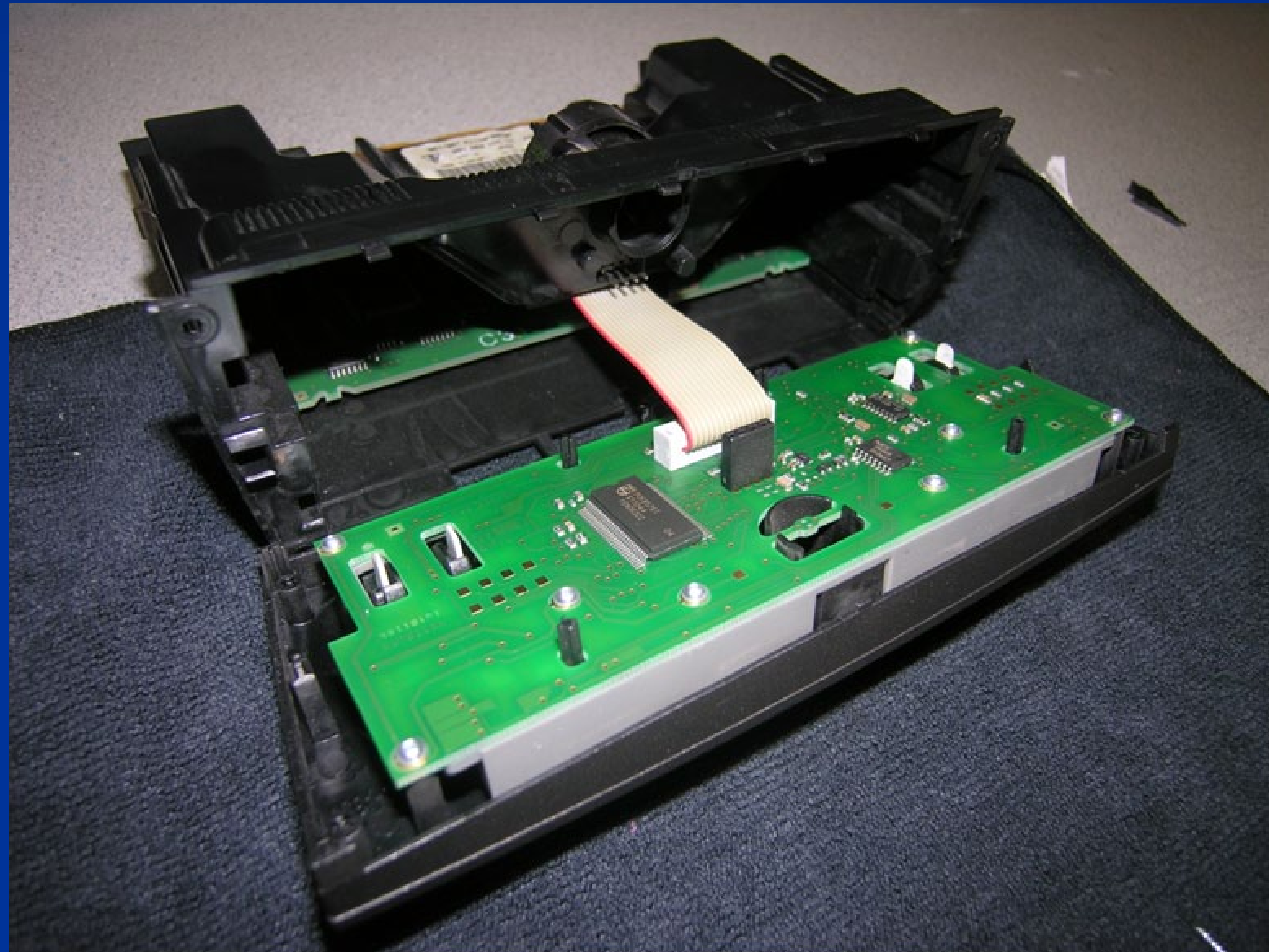
- Here you see the dreaded Temp/Fan switches have degraded and look nasty



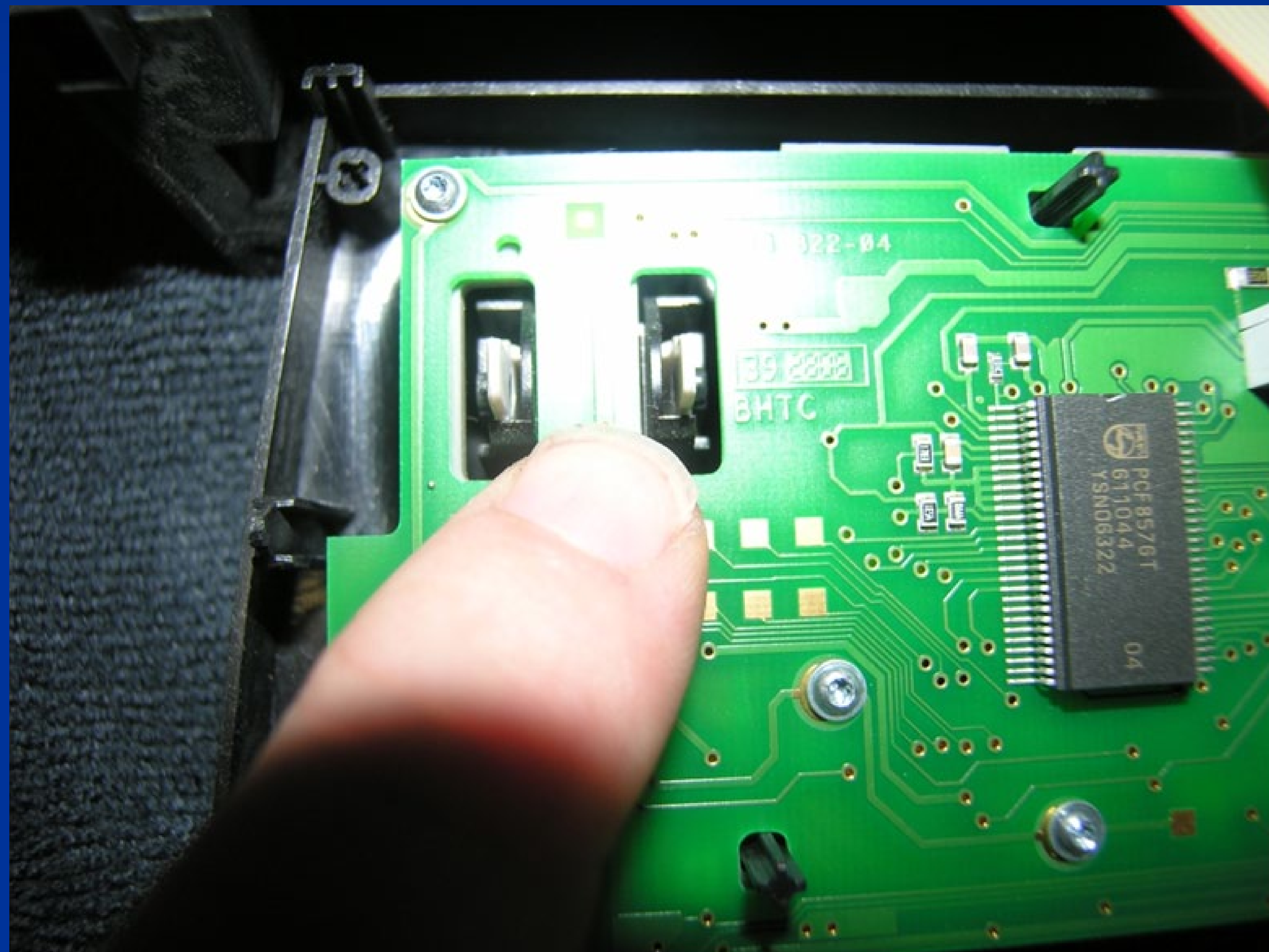
- Flip the panel over and you will see four screws on the outer edges – The screws in this panel are removed with a Torx T-6 tool-Remove all four screws



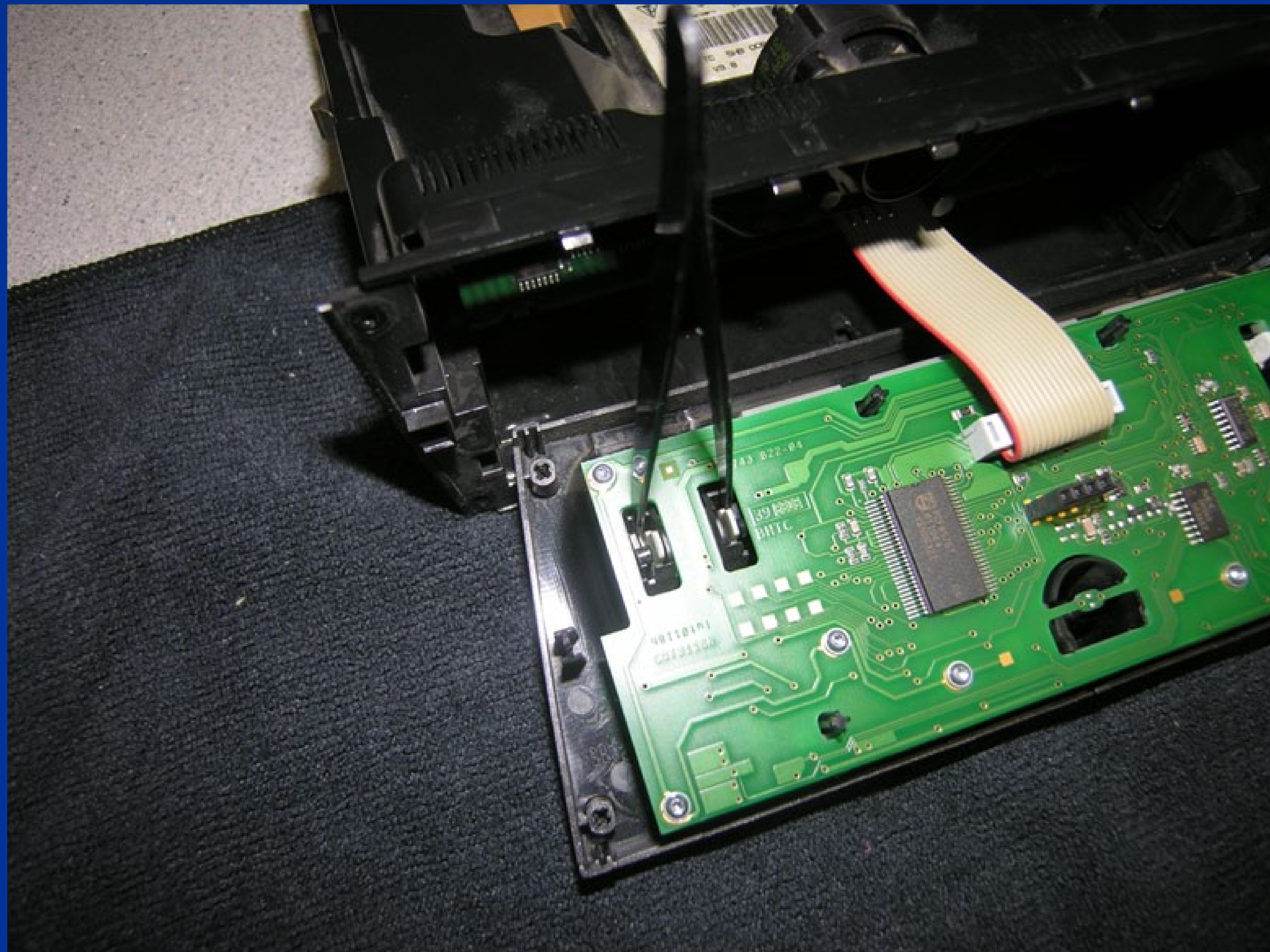
- Gently pry the front panel face from the housing and lay flat



- The switches snap into a black colored mount inside the panel, this mount needs to be pried gently away from each tip so the switch can pop out. Below is another pic of the white switch tips and the black mount inside holding them in place.



- I use a pair of tweezers to pry the black mounting tabs away from the white switch tip, but I have used a toothpick and similar other tools to accomplish the task. Below you see the tweezers pushed into the black mounts so I can pry them outwards away from the white switch tips.



- Once you have pried the black tabs away from the switch tips, the tips need to be pushed forward out toward the front of the panel. As you are pushing you need to use your finger to reach toward the front and rotate the button upward, this will allow the switch to come out much more easily.



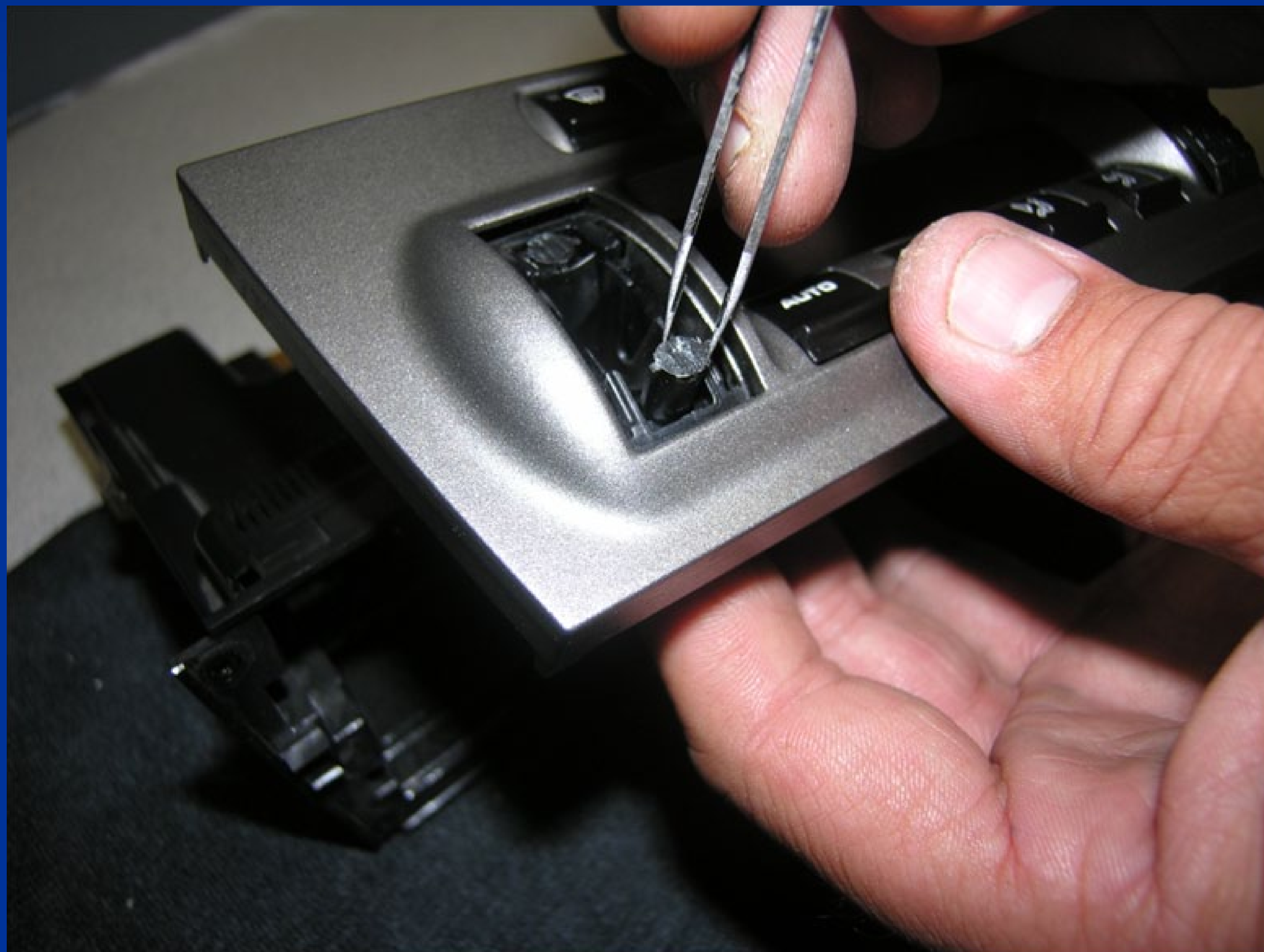
- So you are pushing the white tips with your finger toward the front of the panel as you are rotating the front of the switch up and then down. The switch at this point should start to pop out.



- Now just gently pull the switch out towards you. While keeping the panel facing up.



- The next pic shows me grabbing one of the black sleeves inside the panel, when you push the switch, the sleeves push the electrical contact to operate the panel. The reason I am showing these sleeves is because they will fall out if you rotate the panel over or too far forward. If they fall out just put them back into the hole.



- When your panel is disassembled you should have four screws and two switches apart.



- Next you are going to snap the refinished switches back into the panel. The switches are a bit too long to snap straight into place, they must go in one end at a time and rotated up and down. Push the switch into place and get it lined up.



- Next push the top of the switch into the panel and rotate up. The very top of the switch will actually rotate up into the panel. This will allow you room to push the bottom down and rotate that end into the panel.



- Next push the top of the switch into the panel and rotate up. The very top of the switch will actually rotate up into the panel. This will allow you room to push the bottom down and rotate that end into the panel.



- That's it—Your panel should now look like this. Hope this instruction manual was helpful. As always if you have any questions please do not hesitate to call us.

